



J A D E TM

Dump and Load Utility User's Guide

VERSION 6.3



Copyright © 2009
Jade Software Corporation Limited
All rights reserved

Jade Software Corporation Limited cannot accept any financial or other responsibilities that may be the result of your use of this information or software material, including direct, indirect, special or consequential damages, or loss of profits. There are no warranties extended or granted by this document or software material.

You should be very careful to ensure that the use of this software material and/or information complies with the laws, rules, and regulations of the jurisdictions with respect to which it is used. No part of this document may be reproduced or transmitted in any form or by any means, electronic or mechanical, for any purpose, without the express written permission of Jade Software Corporation Limited.

The information contained herein is subject to change without notice. Revisions may be issued to advise of such changes and/or additions.

Copyright © 2009 Jade Software Corporation Limited.
All rights reserved.

JADE is a trademark of Jade Software Corporation Limited. All trade names referenced are the service mark, trademark, or registered trademark of the respective manufacturer.

For details about other licensing agreements for third party products, you must read the JADE **ReadMe.txt** file.

Contents

Before You Begin	iv
Who Should Read this Guide.....	iv
Related Documentation	iv
Terminology.....	iv
Conventions	v
Chapter 1 Dumping User Data and Loading it into Another Database	6
Overview	6
Dump and Load Utility Considerations	7
Before You Dump or Load Your User Data	8
Running the Dump and Load Utility	8
Using the Dump and Load Windows Utility	9
Using the JADE Data Dump Load Utility Window	10
Using the File Menu.....	11
Dump Data Command	11
Load Data Command	11
Clear Display Command	11
Exit Command.....	11
Using the Options Menu	12
Preferences Command.....	12
Specifying Your Display Options.....	12
Using the Help Menu.....	13
About Command	13
Dumping User Data	13
Loading User Data	16
Running the Dump and Load Utility in Batch Mode.....	18
action	19
transferDir	19
path	19
ini	20
server.....	20
displayTimes	20
help	20
Index	21

Before You Begin

The *JADE Dump and Load Utility User's Guide* is intended as the main source of information when you are dumping and loading data for deployed JADE user applications.

Who Should Read this Guide

The main audience of the *JADE Dump and Load Utility User's Guide* is expected to be system administrators.

Related Documentation

Other documents that are referred to in this guide, or that may be helpful, are listed in the following table, with an indication of the JADE operation or tasks to which they relate.

Title	Related to...
JADE Database Administration Guide	Administering JADE databases
JADE Development Environment Administration Guide	Administering JADE development environments
JADE Development Environment User's Guide	Using the JADE development environment
JADE Installation and Configuration Guide	Installing and configuring JADE
JADE Initialization File Reference	Maintaining JADE initialization file parameter values
JADE Runtime Application Guide	Administering deployed JADE runtime applications
JADE Thin Client Guide	Administering JADE thin client environments

Terminology

In this document, the term Microsoft *Windows* refers to Windows 2003 Server, Windows Vista, Windows XP, Windows 2000, or Windows CE. When there are differences between the versions of Microsoft Windows, the specific version of Microsoft Windows is stated. This also applies to Linux, which is a specific version of UNIX developed by SUSE or Red Hat. The term *UNIX* is used when an issue is generic to all versions of UNIX and the term *Linux* is used if the issue is specific to the SUSE or Red Hat implementation of UNIX.

With the exception of the **jade.exe** program, when referring to Windows program executables in this document, the **.exe** file suffix is omitted; for example, **jadclient** refers to **jadclient.exe** on Windows and **jadclient.sh** on UNIX. Similarly, the Windows **.dll** (Dynamic Link Library) and UNIX **.so** (shared object library) file suffixes are omitted. For example, **jomos** refers to **jomos.dll** (Windows) and **libjomos.so** (Linux).

JADE Dump and Load Utility

User's Guide

Conventions

The *JADE Dump and Load Utility User's Guide* uses consistent typographic conventions throughout.

Convention	Description
Arrow bullet (>)	Step-by-step procedures. You can complete procedural instructions by using either the mouse or the keyboard.
Bold	Items that must be typed exactly as shown. For example, if instructed to type foreach , type all the bold characters exactly as they are printed. File, class, primitive type, method, and property names, menu commands, and dialog controls are also shown in bold type, as well as literal values stored, tested for, and sent by JADE instructions.
<i>Italic</i>	Parameter values or placeholders for information that must be provided; for example, if instructed to enter <i>class-name</i> , type the actual name of the class instead of the word or words shown in italic type. Italic type also signals a new term. An explanation accompanies the italicized type. Document titles and status and error messages are also shown in italic type.
Blue text	Enables you to click anywhere on the cross-reference text (the cursor symbol changes from an open hand to a hand with the index finger extended) to take you straight to that topic. For example, click on the " Before You Dump or Load Your User Data " cross-reference to display that topic.
Bracket symbols ([])	Indicate optional items.
Vertical bar ()	Separates alternative items.
Monospaced font	Syntax, code examples, and error and status message text.
ALL CAPITALS	Directory names, commands, and acronyms.
SMALL CAPITALS	Keyboard keys.

Key combinations and key sequences appear as follows.

Convention	Description
KEY1+KEY2	Press and hold down the first key and then press the second key. For example, "press SHIFT+F2" means to press and hold down the SHIFT key and press the F2 key. Then release both keys.
KEY1,KEY2	Press and release the first key, then press and release the second key. For example, "press ALT+F,X" means to hold down the ALT key, press the F key, and then release both keys before pressing and releasing the X key.

Chapter 1

Dumping User Data and Loading it into Another Database

This document covers the following topics.

- [Overview](#)
- [Dump and Load Utility Considerations](#)
- [Before You Dump or Load Your User Data](#)
- [Running the Dump and Load Utility](#)
- [Using the Dump and Load Windows Utility](#)
- [Running the Dump and Load Utility in Batch Mode](#)

Overview

The Dump and Load utility (**jddlutl**) is supplied with your JADE release, to enable you to transfer your user data from one version of JADE to another where direct file copying is neither appropriate nor possible.

To convert your data, you should use the **JadeConvertDb** application in the **jadclient** program. For details, see Chapter 4, “[Converting a User Database](#)”, in the *JADE Runtime Application Guide*.

The **JADE Dump Load Utility** icon is installed in your JADE program folder when you install JADE. For details, see “[Installing Your JADE Software](#)”, in Chapter 1 of your *JADE Installation and Configuration Guide*.

The Dump and Load utility can be run as a standalone Windows utility or in batch mode (for example, from a command script when loading user data on a UNIX platform). For details, see “[Running the Dump and Load Utility](#)” or “[Running the Dump and Load Utility in Batch Mode](#)”, later in this document.

Use the Dump and Load utility in the following circumstances.

- Transferring user data from one platform to another.

With the availability of the UNIX version of JADE, you may need to transfer your user data from a Windows 2003 Server-based, Windows Vista-based, Windows XP-based, or Windows 2000-based server to a UNIX Linux-based server or the reverse. As the database files for these two platforms are not compatible, the Dump and Load utility provides the mechanism to do this.

- Transferring user data between an ANSI version and a Unicode version of JADE or the reverse, where the database files are incompatible.

- Transporting data in a platform-independent form for initial deployment, instead of copying the user data files. The Dump and Load utility transfers only your user data.

Notes As the transfer of data may run for a significant period and be subject to unexpected problems such as disk space exhaustion, you can halt the dump or load process and restart it at the point at which it halted, if required.

The dump and load processes can be run in parallel as two discrete processes. This utility can be run in local **single user** or remote **single user** mode only. Remote **multiuser** mode is not supported.

The Dump and Load utility can be run over a deployed runtime JADE system.

Dump and Load Utility Considerations

When using the Dump and Load utility:

- Object editions are not preserved during the dump and load processes.
- The creation times are set to the date and time of the creation of the object during the load process.
- You cannot rename classes or properties when loading your user data.
- To ensure the integrity of the transfer mechanism, you must dump and reload your entire database. (Partial dumping and loading is not supported in any form.)
- As the extraction of database contents into a more-easily read ASCII format may pose security issues for some sites and applications, file system security is used to protect the dumped files and to restrict access to the Dump and Load utility itself.

There are *no* encryption hooks for the Dump and Load utility in this release.

- If you are using the Dump and Load utility to transfer your user data between Windows and UNIX Linux environments, a communication mechanism for transferring the data must exist between the two platforms; for example, files.

You can use Network File System (NFS) or SAMBA to share files between Windows and UNIX, as both protocols allow read and write updating of the control file by both ends.

With NFS, either the Windows or the UNIX environment can act as the disk server, depending on the platform on which it is installed. With SAMBA, only the UNIX environment can act as the disk server.

Note You must map common UNIX to Windows directories for your transfer data output files, and any specified paths must be server-relative.

The Windows dump or load process (**jddlutl**) on UNIX platforms cannot be run in local **single user** mode but must be run in remote **single user** mode. However, you can run this utility in local **single user** mode by using the batch **jddlutlb** executable program.

As UNIX uses different carriage return and linefeed (**Cr/Lf**) conventions from those of Windows for ASCII files, a single linefeed (**Lf**) character is used to mark the end of line.

- Your user data is not filtered or initialized during the dump and load processes.

Before You Dump or Load Your User Data

Before you run the Dump and Load utility to transfer your user data, you must first:

1. Check in all checked out methods.
2. Perform any reorganization of your database that is required. (As the schema for the system being dumped must be identical to that of the system being reloaded, an error is raised if reorganization is outstanding.)
3. If you are going to dump a large amount of user data, use the JADE Database utility to certify and compact your database.
4. Back up your existing database.

For details, see “Backups”, in Chapter 3 of your *JADE Database Administration Guide*.

5. Extract and load your schema and form file definitions (**.scm** and **.ddb** files) by using the JADE development environment **Extract** and **Load** commands from the Schema menu or the Schema Load utility.

Caution The Dump and Load utility does *not* extract your schema and form file definitions (**.scm** and **.ddb** files), nor does it load them before the user data load process.

Running the Dump and Load Utility

The dump process reads all instances of your user data in the specified JADE database and writes them to data files in the transfer directory in an ASCII format.

The dump process starts by opening the specified database and then builds a list of all schemas, classes, and database files that need to be dumped. It then dumps this schema information to assist the load process, before dumping your user data in the following phases.

1. Dumps the properties of non-collection instances
2. Dumps the properties of shared collection instances
3. Dumps the properties of exclusive collection instances
4. Dumps the keys and members of shared collection instances
5. Dumps the keys and members of exclusive collection instances

Each phase consists of one or more steps, with each step consisting of dumping the instances of a class in a database file. The dump process is complete when all phases have been performed for all of your user data classes in the system.

A control file in your transfer data directory (**control.dmp**) is updated between each step, to allow the load process to synchronize with the dump process. The dump process can be restarted at the start of each step if it failed for any reason during that step.

The process automatically restarts from the appropriate step the next time it is run.

All informational messages, warnings, and error messages are logged in the log file **dump.log** located in the transfer data directory.

Note No attempt is made to check that there is enough disk space to perform the entire dump operation.

The load process reads all ASCII data files produced by the dump process and reconstructs the instances in the specified new JADE database. The process starts by polling the control file to see if the dump process has started, and builds a list from the dumped schema information of all schemas, classes, and database files that are to be loaded. It then loads each ASCII data file in turn, mimicking the phases of the dump process.

The target database into which the transferred user data is to be loaded must not contain user data.

The load process is complete when the dump process has also completed and all ASCII data files have been loaded. The load process can be restarted at the beginning of each ASCII data file step if it failed for any reason during that step. The load process automatically restarts from the appropriate step the next time it is run.

All informational messages, warnings, and error messages are logged in the **load.log** log file in the specified transfer data directory.

Using the Dump and Load Windows Utility

The **jddlutl** Dump and Load utility is a standalone Windows utility that is used for initiating the dump or load of your user data.

To initiate the Dump and Load utility, ensure that the correct path is specified in the command line for the Dump and Load utility, as shown in the following example.

```
d:\jade\bin\jddlutl transferDir=d:\jade\testdata path=d:\jade\system
ini=d:\jade\system\jade.ini server=singleUser displayTimes=true
```

The syntax of the Dump and Load utility is:

```
jddlutl transferDir=transfer-data-directory-path
      path=database-path
      ini=initialization-file-name
      [server=server-mode] // singleUser or remoteSingleUser
      [displayTimes=boolean]
```

➤ To initiate the Dump and Load utility

1. Ensure that you have a full backup of your database.
2. Perform one of the following actions.
 - Select the **JADE Dump Load Utility** program icon from your JADE program folder.
 - In Explorer or File Manager, access the directory in which your JADE binary files are located (for example, **c:\jade\bin**) and then double-click on the **jddlutl** program file.

The JADE Data Dump Load Utility window is then displayed.

Although you can run the dump and the load processes in parallel, each process must have its own executable program. You would therefore:

1. Invoke the Dump and Load utility on the platform containing your source user data.



2. Select the **Dump Data** command from the File menu to specify your dump parameters and then initiate the dump process.
3. Invoke the Dump and Load utility on the target platform for your loaded user data.
4. Select the **Load Data** command from the File menu to specify your load parameters and then initiate the load process.

Using the JADE Data Dump Load Utility Window

The JADE Data Dump Load Utility window consists of a:

- Menu bar, containing the following menus.
 - File
 - Options
 - Help

For details, see the following subsections.

- Main display area, which has a dump mode and a load mode

This area is used to display informational messages, warnings, and errors during the dump or load process. The time and date of the message, its type, and the text of the message are output in a logging style.

- Status line

The status line at the lower left of the window displays immediate status information about the dump or load process; for example, it usually displays the approximate percentage completed of the entire dump or load process.

- Progress bar

The progress bar at the bottom of the window displays the approximate percentage completed of the current step of the dump or load process. (This percentage corresponds to the processing required to dump or load a transfer file of your user data.)

- **Cancel** button

The **Cancel** button is enabled during the dump or load process, to enable you to stop the current process. When you click this button, the current step is aborted.

When you next select the appropriate File menu command to start that process, it is restarted from the beginning of the step at which the processing was halted. The appropriate dump or load parameters dialog is redisplayed, to enable you to click the applicable **Dump** button or **Load** button to restart the process.

The **Transfer Directory** text box is ignored, as the process is restarted using the previous values for the parameter with which the process was halted.

Using the File Menu

Use the File menu in the JADE Data Dump Load Utility window to perform the actions listed in the following table.

Menu Command	Action
Dump Data	Displays the Dump Parameters dialog
Load Data	Displays the Load Parameters dialog
Clear Display	Clears the running display of messages output to the window
Exit	Exits from the Dump and Load utility

These menu commands are described in the following subsections.

Dump Data Command

Select the **Dump Data** command from the JADE Data Dump Load Utility window File menu to display the Dump Parameters dialog that enables you to specify your options for the dumping of your user data.

For details, see [“Dumping User Data”](#), later in this document.

Load Data Command

Select the **Load Data** command from the JADE Data Dump Load Utility window File menu to display the Load Parameters dialog that enables you to specify your options for the loading of your user data.

For details, see [“Loading User Data”](#), later in this document.

Clear Display Command

Select the **Clear Display** command from the JADE Data Dump Load Utility window File menu to clear the running display of dump or load messages output to the JADE Data Dump Load Utility window.

When you run a Dump and Load utility operation, a running display of output messages is optionally produced in your JADE Data Dump Load Utility window.

This display provides informational messages, warnings, and errors that occur during the phases of the dump or load process. You can optionally display the time and date of each message.

For details about enabling or disabling the display of messages and dates and times, see [“Specifying Your Display Options”](#), later in this document.

Note Regardless of the enabling or disabling of the message display, this information is output to the **dump.log** or **load.log** files located in your specified transfer data directory. (For details, see [“Dumping User Data”](#) and [“Loading User Data”](#), later in this document.)

➤ To clear the running display

- Select the **Clear Display** command on the File menu.

Exit Command

Use the **Exit** command from the File menu to exit from the Dump and Load utility.

Your log files are not removed from the transfer data directory when you from exit from the Dump and Load utility. You should therefore delete them manually when you have finished using them.

➤ To exit from the Dump and Load utility

- Select the **Exit** command from the File menu.

You can also exit from the JADE Data Dump Load Utility window by clicking the close icon (☒) at the top right corner of the window, or by selecting the **Close** command from the Control-Menu.

The JADE Data Dump Load Utility window is then closed.

Using the Options Menu

Use the Options menu in the JADE Data Dump Load Utility window to change the options associated with displaying output messages in the window during the dump and load processes.

The Options menu provides the **Preferences** command, described in the following subsection.

Preferences Command

The **Preferences** command from the JADE Data Dump Load Utility window Options menu enables you to specify your JADE Data Dump Load Utility window viewing preferences.

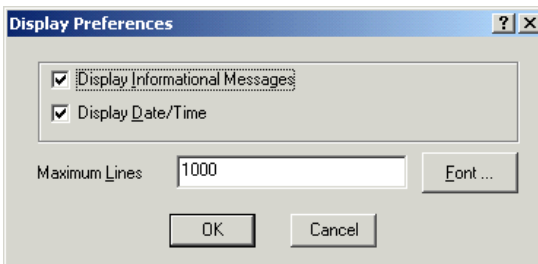
For details about setting the display in your JADE Data Dump Load Utility window, see “[Specifying Your Display Options](#)”, in the following subsection.

Specifying Your Display Options

➤ To specify your JADE Data Dump Load Utility window display preferences

1. Select the **Preferences** command from the Options menu.

The Display Preferences dialog, shown in the following diagram, is then displayed.



2. Uncheck the **Display Informational Messages** check box if you do not want all informational messages from the dump and load process phases displayed in your JADE Data Dump Load Utility window as well as any warning or error message that is raised.

As a large number of information-only messages may be produced, you can use this check box to hide their display and therefore allow warning and error messages to be observed more easily.

Informational messages are output to the appropriate **dump.log** and **load.log** files in your specified transfer data directory, regardless of the setting of this check box. Informational messages are output to the window by default.

3. Uncheck the **Display Date / Time** check box if you do not want date and time information output with messages displayed in the JADE Data Dump Load Utility window. When this check box is unchecked to hide the display of date and time information, more room is provided in the main display area of the JADE Data Dump Load Utility window for messages.

Date and time information is output to the appropriate **dump.log** and **load.log** files in your specified transfer data directory, regardless of the setting of this check box. Date and time information is output to the window by default.
4. If you do not want the default of 1000 lines output to the main display area of the window before the display is automatically cleared and the display then restarted from the top, specify the maximum number of displayed lines that you require.
5. Click the **Font** button if you want to change the default display font from System, Bold, and 12 points. The common Font dialog is then displayed, to enable you to make your font selections.
6. Click the **OK** button to confirm your selections, or the **Cancel** button to discard your selections.

Your current settings are then changed.

Using the Help Menu

Use the **About** command in the Help menu to access the information about the Dump and Load utility. This command is described in the following subsection.

About Command

The Dump and Load utility Help menu **About** command accesses information about the utility. This information includes the JADE release version and copyright information.

➤ To access the Dump and Load utility information

- Select the **About** command from the Help menu

The About box is then displayed. This dialog is for display purposes only.

Dumping User Data

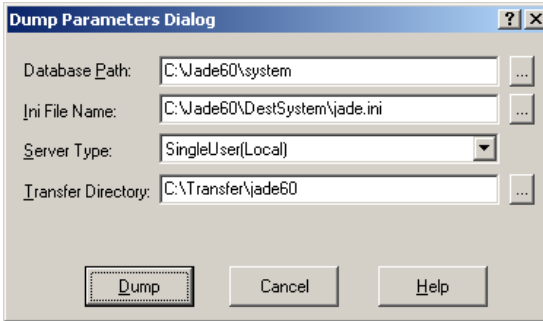
➤ To dump your user data from your source platform or node

1. Ensure that your user data is ready to be transferred and that you have specified any display options that you require.

For details, see “[Before You Dump or Load Your User Data](#)”, earlier in this document.

2. Select the **Dump Data** command from the File menu in the JADE Data Dump Load Utility window.

- The Dump Parameters dialog, displayed in the following diagram, is then displayed.



- In the **Database Path** text box, specify the full path in which your database files are located. The database path must exist.

If you are unsure of your database directory, click the adjacent browse button (indicated by the ... points of ellipsis symbol) to display the common Directory Selection dialog that enables you to select the database path in which your user data is located.

If you have previously run the dump process in the current JADE release, the database path that you used last time you dumped your user data is displayed in this text box.

- In the **Ini File Name** text box, specify the full path and the name of your JADE initialization file if it is located in a directory other than the database directory or it has a name other than the **jade.ini** default. The initialization path and file must exist.

If you are unsure of your initialization file, click the adjacent browse button (indicated by the ... points of ellipsis symbol) to display the common File Selection dialog that enables you to select the initialization file that is used.

- In the **Server Type** combo box, select the mode in which you want to dump your user data; that is, in **SingleUser** (local) or **SingleUser** (remote) mode. By default, user data is dumped in single user local mode.

If you have previously run the dump process in the current JADE release, the server mode in which your user data was last dumped is displayed.

- In the **Transfer Directory** text box, specify the full path of the directory into which your user data is to be written. The transfer data directory must exist.

If you are unsure of your transfer directory, click the adjacent browse button (indicated by the ... points of ellipsis symbol) to display the common Directory Selection dialog that enables you to select the transfer directory in which your user data is to be dumped.

If you have previously run the dump process in the current JADE release, the transfer directory into which your user data was last written to and read from is displayed.

- Click the **Dump** button to:
 - Validate your specified parameters
 - Store them in the [[JadeDumpLoad](#)] section of your specified initialization file
 - Close the dialog
 - Initiate the dump process

JADE Dump and Load Utility

User's Guide

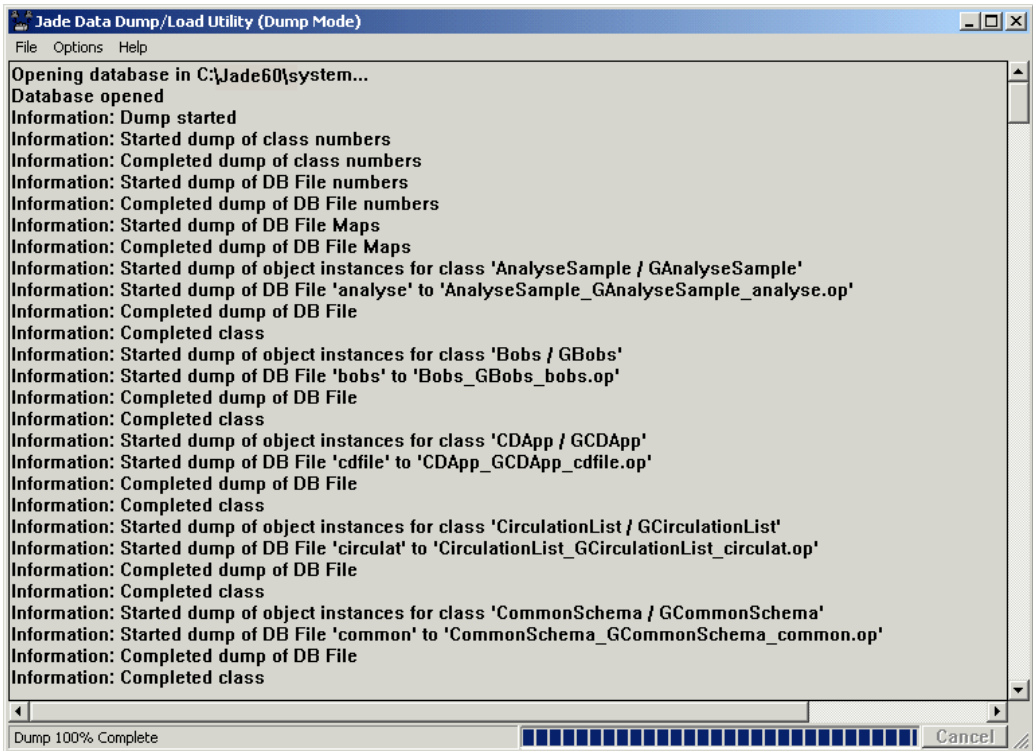
For details about the [JadeDumpLoad] section, see “User Data Dump and Load Section [JadeDumpLoad]”, in your JADE *Initialization File Reference*.

Alternatively, click the **Cancel** button to discard your selections.

When you have initiated the dumping of your user data from the database to your specified transfer data directory, the main display area of the JADE Data Dump Load Utility window then displays informational messages, warnings, and errors during the dump process.

The time and date of the message, its type, and the text of the message are output in a logging style, which you can tailor by using the Display Preferences dialog. (For details, see “[Specifying Your Display Options](#)”, earlier in this document.)

An example of the JADE Data Dump Load Utility window in dump mode is shown in the following diagram.



Click the **Cancel** button at any time during the dump process if you want to stop the current process. The current step is then aborted.

When you next select the **Dump Data** command from the File menu to start that process, it is restarted from the beginning of the step at which the dump processing was halted. (The Dump Parameters dialog is redisplayed, to enable you to click the **Dump** button to restart the dump process. The **Transfer Directory** text box is ignored, as the dump process is restarted using the previous value for this parameter with which the process was halted.)

Tip When you have started dumping your user data, you can then invoke another Dump and Load utility application and initiate the loading of that data as each step in the dump process phase completes. For details, see “[Loading User Data](#)”, in the following section.

Loading User Data

➤ **To load your user data to your target platform or node**

1. Ensure that your user data has already been dumped to your transfer data directory or that you have already started the dump process on your source platform or node.

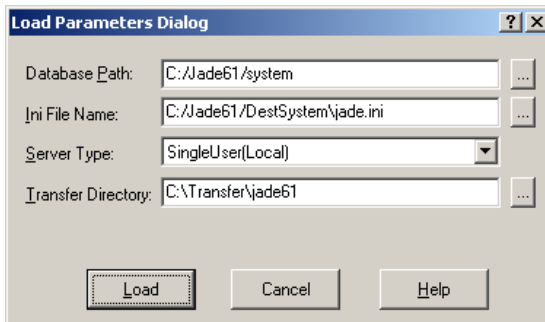
For details, see “[Dumping User Data](#)”, earlier in this document.

If your user data is currently being dumped and you are loading it into a directory on the same node (for example, from one JADE release to another), select the **JADE Dump Load Utility** program icon from your JADE program folder again, to invoke another Dump and Load utility application.



Tip For better performance, run the dump and load processes on separate workstations so that both processes will then not have to share the same Central Processing Unit (CPU).

2. Select the **Load Data** command from the File menu in the JADE Data Dump Load Utility window.
3. The Load Parameters dialog, displayed in the following diagram, is then displayed.



4. In the **Database Path** text box, specify the full path in which your database files are located and to which your transferred user data is to be written. The database path must exist, and it cannot contain user data.

If you are unsure of your database directory, click the adjacent browse button (indicated by the ... points of ellipsis symbol) to display the common Directory Selection dialog that enables you to select the database path to which your user data is to be written. If you have previously run the load process in the current JADE release, the database path that you used last time you loaded your user data is displayed in this text box.

5. In the **Ini File Name** text box, specify the full path and the name of your JADE initialization file if it is located in a directory other than the database directory or it has a name other than the **jade.ini** default. The initialization path and file must exist.

JADE Dump and Load Utility

User's Guide

If you are unsure of your initialization file, click the adjacent browse button (indicated by the ... points of ellipsis symbol) to display the common File Selection dialog that enables you to select the initialization file that is used.

6. In the **Server Type** combo box, select the mode in which you want to load your user data (that is, in **SingleUser** (local) or **SingleUser** (remote) mode). By default, user data is loaded in single user local mode. If you have previously run the load process in the current JADE release, the server mode in which your user data was last loaded is displayed.
7. In the **Transfer Directory** text box, specify the full path of the directory into which your user data was dumped in preparation for the load process. The transfer directory must exist.

If you are unsure of your transfer directory, click the adjacent browse button (indicated by the ... points of ellipsis symbol) to display the common Directory Selection dialog that enables you to select the transfer directory from which your user data is to be loaded.

If you have previously run the load process in the current JADE release, the transfer directory in which your user data was last written to and read from is displayed.

8. Click the **Load** button to:
 - a. Validate your specified parameters
 - b. Store them in the [**JadeDumpLoad**] section of your specified initialization file
 - c. Close the dialog
 - d. Initiate the load process

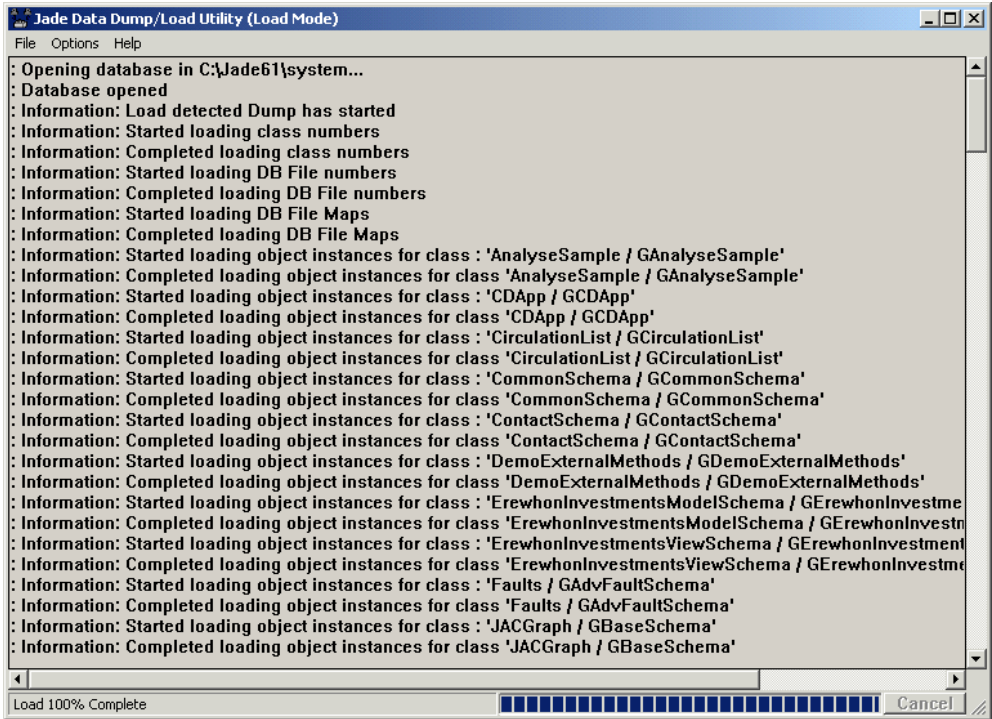
For details about the [**JadeDumpLoad**] section, see “User Data Dump and Load Section [**JadeDumpLoad**]”, in your *JADE Initialization File Reference*.) Alternatively, click the **Cancel** button to discard your selections.

When you have initiated the loading of your user data from the specified transfer data directory, the main display area of the JADE Data Dump Load Utility window then displays informational messages, warnings, and errors during the load process.

The load process checks that your specified target database into which the transferred user data is to be loaded contains no existing user data. If existing user data is detected, an exception is raised and the load process cannot commence until you have removed existing user data from that database.

The time and date of the message, its type, and the text of the message are output in a logging style, which you can tailor by using the Display Preferences dialog. (For details, see “[Specifying Your Display Options](#)”, earlier in this document.)

An example of this window in load mode is shown in the following diagram.



Click the **Cancel** button at any time during the load process if you want to stop the current process. The current step is then aborted.

When you next select the **Load Data** command from the File menu to start that process, it is restarted from the beginning of the step at which the load processing was halted. (The Load Parameters dialog is redisplayed, to enable you to click the **Load** button to restart the load process. The **Transfer Directory** text box is ignored, as the load process is restarted using the previous values for those parameters with which the process was halted.)

The following warning message is displayed if the load process reaches a step in the dump process that has not yet completed.

```
Waiting for dump of process-state for class schema-name / class-name to complete
```

This may indicate that the dump process has been halted by using the **Cancel** button or that the load is waiting for large a dump step to be actioned. The load process resumes when that step in the dump process has been completed.

Running the Dump and Load Utility in Batch Mode

The **jddlutlb** program, installed with your JADE software, enables you to automate the Dump and Load utility by running it in batch mode.

JADE Dump and Load Utility

User's Guide

Run the batch Dump and Load utility (for example, from a command script when loading user data in single user mode on a UNIX platform), specifying the following.

```
jddlutlb action=operation-type
         transferDir=transfer-data-directory-path
         path=database-path
         ini=initialization-file-name
         [server=server-mode]
         [displayTimes=boolean]
         [help]
```

The following is an example of the command for dumping test user data.

```
d:\jade\bin\jddlutlb action=dump transferDir=d:\jade\testdata
path=d:\jade\system ini=d:\jade\system\jade.ini server=remoteSingleUser
displayTimes=true
```

The batch Dump and Load utility program displays a progress report of each phase of the dump or load process. Standard dump or load information is output to **stdout** and error information is output to **stderr**. At the end of the dump or load operation, the running display provides a completion report. For details about displaying and redirecting the output from JADE batch utilities, see the [DisplayApplicationMessages](#), [LogServer](#), and [UseLogServer](#) parameters under “JADE Log Section [[JadeLog](#)]”, in your *JADE Initialization File Reference*.

If the **jddlutlb** executable program fails, a non-zero exit code is returned and an error message is displayed; for example, if the database directory was invalid.

Notes If the program stops for any reason (for example, it runs out of disk space), although you cannot manually halt a batch dump or load process, it restarts from the beginning of the step at which it halted when you next run that dump or load batch program.

To run this on UNIX under SUSE Linux Enterprise Server or the Red Hat distribution of Linux, use the **jddlutlb** command line parameters described in this section and ensure that the standard JADE environment variables (documented under “Required Environment Variables”, in [Chapter 3](#) or [Chapter 4](#) of your *JADE Installation and Configuration Guide*, respectively) are correctly defined.

The batch Dump and Load utility program parameters are described in the following subsections. (For more details, see “[Running the Dump and Load Utility](#)”, earlier in this document.)

action

The **action** command specifies the type of action that you want to perform on your user data. The valid entries are **dump** or **load**.

transferDir

The **transferDir** parameter specifies the path to which your user data files are written during the dump process or from which they are read during the load process.

The transfer directory must exist.

path

The **path** parameter specifies the path of your JADE database directory from which your user data files are read during a dump action or to which they are written during a load action.

The database path must exist, and the target database into which transferred data is loaded cannot contain existing user data.

ini

The optional **ini** parameter enables you to specify the fully qualified name of your JADE initialization file if it is not located in the database directory specified in the **path** parameter or it has a file name other than the **jade.ini** default.

server

The optional **server** parameter enables you to specify the mode in which the dump or load operation is to be actioned; that is, **singleUser** or **remoteSingleUser**.

By default, your user data is dumped in **singleUser** mode; that is, local, single user mode.

displayTimes

The optional **displayTimes** parameter enables you to specify that you do not want date and time information output with messages to **stdout** or **stderr**.

When you specify this parameter with a value of **false**, date and time information is not output with errors and warnings.

By default, dates and times are output; that is, a value of **true** is assumed.

help

The optional **help** parameter displays the required parameters, their values, and a brief explanation of each parameter.

Index

A

- About command, 13
- action parameter
 - batch Dump and Load utility, 19
- ANSI version
 - transferring user data, 6
- applications
 - loading runtime-only, 9

B

- batch Dump and Load utility, 6-7, 19-20

C

- Clear Display command, 11
- Close command, 12
- command
 - About, 13
 - Clear Display, 11
 - Close, 12
 - Dump Data, 11-15
 - Exit, 11
 - Load Data, 11, 16-18
 - Preferences, 12
- considerations
 - Dump and Load utility, 7
- control file
 - Dump and Load utility, 8
- control.dmp file, 8

D

- data
 - converting user, 6-20
 - dumping and loading user, 6-20
- database
 - backing up, 8
 - deploying, 6-20
 - dumping and loading user data, 6-20
 - incompatible files, 6
 - loading runtime, 9
 - reorganizing, 8
 - specifying path, 14-16, 19

- directory
 - user data transfer, 6-20
- displayTimes parameter, 20
- Dump and Load utility
 - batch, 6-7, 19-20
 - considerations, 7
 - halting, 9-10, 15, 18
 - overview, 6-7, 19-20
 - restarting, 9-10, 15, 18
 - running, 8
 - using, 9-18
- Dump Data command, 11-15
- dump.log file, 8, 12, 17

E

- errors
 - Dump and Load utility, 8, 12, 17, 20
- executable program
 - jadload, 9
 - jddlutl, 6-18
 - jddlutlb batch, 19-20
- Exit command, 11

F

- files
 - compressing user data, 7, 14
 - control, 8
 - control.dmp, 8
 - data, 6-20
 - dump.log, 8, 12, 17
 - dumping user data, 6-20
 - incompatible database, 6
 - jade.ini, 14-17, 20
 - jadload, 9
 - jddlutl, 6-18
 - jddlutlb, 6-7, 19-20
 - log, 8, 12, 17
- fonts
 - changing, 13

H

- help
 - obtaining online, 13

help parameter for the batch Dump and Load utility, 20

I

ini parameter, 20

J

JADE

- upgrading version, 6

jade.ini file, 14-17, 20

jadload program, 9

jddlutl program, 6-18

jddlutlb program, 6-7, 19-20

L

Load Data command, 11, 16-18

local single user mode, 7, 14, 17, 20

logs

- Dump and Load utility, 8, 12, 17

M

messages

- Dump and Load utility, 8, 12, 17, 20

mode

- Dump and Load utility, 7, 17, 20

- local single user, 7, 14, 17, 20

- remote single user, 7, 14, 17, 20

- single user, 7, 14, 17, 20

O

online help

- obtaining, 13

P

parameter

- action, 19

- displayTimes, 20

- help, 20

- ini, 20

- path, 19

- server, 20

- transferDir, 19

path

- database, 14-16, 19

path parameter

- batch Dump and Load utility, 19

platform

- transferring user data, 6

Preferences command, 12

programs

- batch Dump and Load, 19-20

- jadload, 9

- jddlutl, 6-18

R

releases

- deploying, 6-20

remote single user mode, 7, 14, 17, 20

reorganization

- database, 8

S

Schema Load utility, 9

security

- user data transfer, 7

server parameter, 20

single user mode

- specifying, 7, 14, 17, 20

stderr output, 19-20

stdout output, 19-20

T

transfer directory for user data, 6-20 14, 15-20

transferDir parameter, 19

U

Unicode version

- transferring user data, 6

user data

- compressing dumped files, 7, 14

- dumping and loading, 6-20

utility

- batch Dump and Load, 6-7, 19-20

- Dump and Load, 6-18

- halting Dump and Load, 9-10, 15, 18

- restarting Dump and Load, 9-10, 15, 18

- Schema Load, 9

V

version

- ANSI, 6

- Unicode, 6

- upgrading JADE, 6