



J A D E™

Schema Inspector Utility User's Guide

VERSION 6.3



Copyright © 2009
Jade Software Corporation Limited
All rights reserved

Jade Software Corporation Limited cannot accept any financial or other responsibilities that may be the result of your use of this information or software material, including direct, indirect, special or consequential damages, or loss of profits. There are no warranties extended or granted by this document or software material.

You should be very careful to ensure that the use of this software material and/or information complies with the laws, rules, and regulations of the jurisdictions with respect to which it is used. No part of this document may be reproduced or transmitted in any form or by any means, electronic or mechanical, for any purpose, without the express written permission of Jade Software Corporation Limited.

The information contained herein is subject to change without notice. Revisions may be issued to advise of such changes and/or additions.

Copyright © 2009 Jade Software Corporation Limited.
All rights reserved.

JADE is a trademark of Jade Software Corporation Limited. All trade names referenced are the service mark, trademark, or registered trademark of the respective manufacturer.

For details about other licensing agreements for third party products, you must read the JADE **ReadMe.txt** file.

Contents

Before You Begin	iv
Who Should Read this Guide.....	iv
Terminology.....	iv
Related Documentation	iv
Conventions	v
Chapter 1 Inspecting a Deployed Database	6
Overview	6
Using the Schema Inspector Dialog	8
Using the File Menu	8
Using the Edit Menu.....	8
Using the View Menu.....	9
Using the Help Menu	9
Index Command	9
About Command.....	9
Using the Schema Inspector Window	10
Using the File Menu	12
Using the Options Menu	12
Using the Help Menu	12
Index	13

Before You Begin

The *JADE Schema Inspector Utility User's Guide* is intended as the main source of information when you inspecting JADE database objects in production systems.

Who Should Read this Guide

The main audience of the *JADE Schema Inspector Utility User's Guide* is expected to be system administrators.

Terminology

In this document, the term Microsoft *Windows* refers to Windows 2003 Server, Windows Vista, Windows XP, Windows 2000, or Windows CE. When there are differences between the versions of Microsoft Windows, the specific version of Microsoft Windows is stated. This also applies to Linux, which is a specific version of UNIX developed by SUSE or Red Hat. The term *UNIX* is used when an issue is generic to all versions of UNIX and the term *Linux* is used if the issue is specific to the SUSE or Red Hat implementation of UNIX.

With the exception of the **jade.exe** program, when referring to Windows program executables in this document, the **.exe** file suffix is omitted; for example, **jadclient** refers to **jadclient.exe** on Windows and **jadclient.sh** on UNIX. Similarly, the Windows **.dll** (Dynamic Link Library) and UNIX **.so** (shared object library) file suffixes are omitted. For example, **jomos** refers to **jomos.dll** (Windows) and **libjomos.so** (Linux).

Related Documentation

Other documents that are referred to in this guide, or that may be helpful, are listed in the following table, with an indication of the JADE operation or tasks to which they relate.

Title	Related to...
JADE Database Administration Guide	Administering a JADE database
JADE Development Environment Administration Guide	Administering the JADE development environment
JADE Development Environment User's Guide	Using the JADE development environment to development JADE applications
JADE Initialization File Reference	Maintaining JADE initialization file parameter values
JADE Installation and Configuration Guide	Installing and configuring JADE
JADE Report Writer User's Guide	Using the JADE Report Writer to develop and run reports
JADE Runtime Application Guide	Administering JADE deployed runtime applications
JADE Web Application Guide	Implementing, monitoring, and configuring Web applications

JADE Schema Inspector Utility

User's Guide

Conventions

The *JADE Schema Inspector Utility User's Guide* uses consistent typographic conventions throughout.

Convention	Description
Arrow bullet (>)	Step-by-step procedures. You can complete procedural instructions by using either the mouse or the keyboard.
Bold	Items that must be typed exactly as shown. For example, if instructed to type foreach , type all the bold characters exactly as they are printed. File, class, primitive type, method, and property names, menu commands, and dialog controls are also shown in bold type, as well as literal values stored, tested for, and sent by JADE instructions.
<i>Italic</i>	Parameter values or placeholders for information that must be provided; for example, if instructed to enter <i>class-name</i> , type the actual name of the class instead of the word or words shown in italic type. Italic type also signals a new term. An explanation accompanies the italicized type. Document titles and status and error messages are also shown in italic type.
Blue text	Enables you to click anywhere on the cross-reference text (the cursor symbol changes from an open hand to a hand with the index finger extended) to take you straight to that topic. For example, click on the " Using the Schema Inspector Window " cross-reference to display that topic.
Bracket symbols ([])	Indicate optional items.
Vertical bar ()	Separates alternative items.
Monospaced font	Syntax, code examples, and error and status message text.
ALL CAPITALS	Directory names, commands, and acronyms.
SMALL CAPITALS	Keyboard keys.

Key combinations and key sequences appear as follows.

Convention	Description
KEY1+KEY2	Press and hold down the first key and then press the second key. For example, "press SHIFT+F2" means to press and hold down the SHIFT key and press the F2 key. Then release both keys.
KEY1,KEY2	Press and release the first key, then press and release the second key. For example, "press ALT+F,X" means to hold down the ALT key, press the F key, and then release both keys before pressing and releasing the X key.

This document covers the following topics.

- [Overview](#)
- [Using the Schema Inspector Dialog](#)
- [Using the Schema Inspector Window](#)

Overview

The Schema Inspector is supplied with JADE, to enable you to inspect database objects in your production JADE systems.

The **Schema Inspector** icon is installed in your JADE program folder when you install JADE.

A security filter method enables you to define security to specify users who can inspect class instances in a deployed (run time) database. For details, see “[Deployed JADE Database Inspection Security](#)”, in Chapter 3 of your *JADE Object Manager Guide*.

Note At run time, no instances can be inspected if you do not implement the security filter method to return **true** in a deployed system. This ensures that any user of the Schema Inspector in a deployed application can inspect only those classes to which access has been specifically permitted by the application software developer.

The following is an example of the command line required to run the Schema Inspector.

```
jade.exe path=s:\jade\system ini=c:\jade\system\jade.ini schema=RootSchema  
app=SchemaInspector
```

➤ To execute the deployed Schema Inspector



1. Click the **Schema Inspector** icon in the JADE program folder, to run the standalone Schema Inspector application.

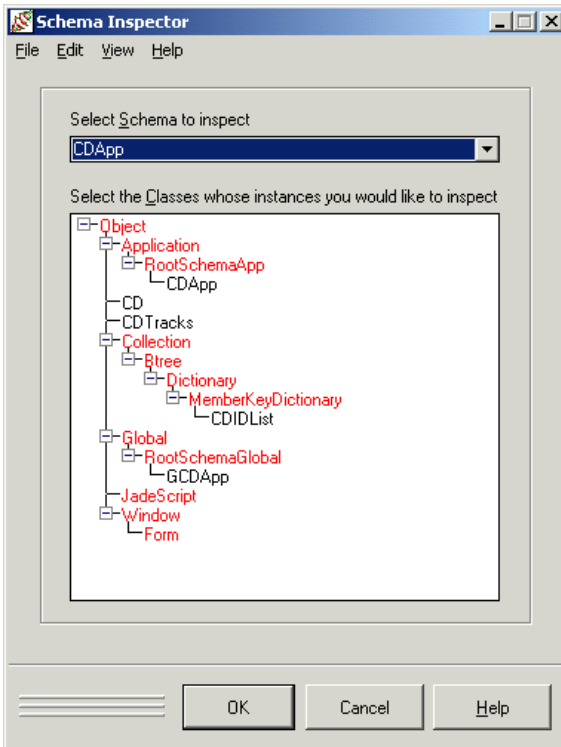
The Schema Inspector sign-on form is then displayed. The user id of your workstation is displayed in the **User Id** text box by default.

As your password is hidden for security reasons, each character is represented by an asterisk (*) character.

The user id and password are case-sensitive.

2. Specify your user id and optionally your password in the appropriate text boxes, and then click the **OK** button to sign on to the Schema Inspector.

The Schema Inspector dialog, shown in the following diagram, is then displayed.



3. In the **Select Schema to inspect** combo box, select the schema whose instances you want to inspect. The classes list box is then populated with all classes in the selected schema.
4. In this list box, select the classes whose instances you want to inspect.

Tip As the classes list box is a multiple-selection list box, you can use the SHIFT or CTRL key to select a group or range of classes.

5. When you have selected the required classes, click the **OK** button. If security is not set, the Schema Inspector is then displayed. Alternatively, click the **Cancel** button to abandon your selections.
6. If security is set for a selected class and you do not have sufficient security, a message box is displayed, informing you that you do not have sufficient security to inspect instances of the specified class.

Perform one of the following actions.

- Select another class to which you may have inspection access rights.
- Select the **Logoff** command from the File menu to display the Schema Inspector sign-on form and specify a user id and password that permit access to the classes whose instances you want to inspect.
- Select the **Exit** command from the File menu, to close the Schema Inspector.

When any security filter requirements have been satisfied, the Schema Inspector window is then displayed. For details about inspecting class instances, see “[Using the Schema Inspector Window](#)”, later in this document.

Using the Schema Inspector Dialog

The Schema Inspector dialog menu bar contains the following menus.

- [File](#)
- [Edit](#)
- [View](#)
- [Help](#)

Using the File Menu

Use the File menu in the Schema Inspector dialog to:

- Exit from the inspector. (You can also exit from the Schema Inspector dialog by clicking the close icon (☒) at the top right corner of the window or by selecting the **Close** command from the Control-Menu.)
- Log off from the Schema Inspector when access to class instances is restricted and you want to specify another user id and optionally the password.

➤ To exit from the Schema Inspector dialog

- Select the **Exit** command on the File menu. Alternatively, click the **Cancel** button.

The Schema Inspector dialog is then closed.

➤ To log off from the Schema Inspector dialog

- Select the **Logoff** command on the File menu.

The Schema Inspector sign-on form is then displayed, to enable you to change the user id and optionally the password if access to instances of a class is restricted.

Using the Edit Menu

➤ To locate a class in the schema hierarchy

1. Perform one of the following actions.
 - Select the **Find** command from the Edit menu.
 - Press F4.

The Find dialog is then displayed.

2. In the **Class to search for:** combo box, select the class that you want to locate for subsequent inspection.
3. Click the **OK** button. Alternatively, click the **Cancel** button.

Your selected class is then highlighted in the class hierarchy list box of the Schema Inspector dialog.

Using the View Menu

Although a schema inherits all classes and their associated properties, methods, and constants from its superschemas, these inherited classes are not displayed by default in the Schema Inspector dialog of the subschema. Instead, for the sake of clarity, only classes local to the schema are displayed, as well as any superschema classes to which subclasses, methods, or constants have been added.

➤ To display superschema classes in the schema hierarchy

1. Select the **Superschemas** command from the View menu.

The View Superschemas dialog is then displayed. The current schema is displayed in the **Show classes and methods defined in:** combo box, by default.

2. Select the superschema whose classes you want to display in your Schema Inspector.
3. When you have selected the appropriate superschema, click the **OK** button.

The classes list box of the Schema Inspector dialog is then populated with all of the classes in the specified superschema. (Classes defined in a superschema are displayed in red and those defined in the current schema are displayed in black.)

Using the Help Menu

Use the commands in the Schema Inspector dialog Help menu to access the standard Common User Access (CUA) help options. These commands are described in the following subsections.

Index Command

Use the Schema Inspector dialog Help menu **Index** command to open the Schema Inspector online help.

The first page of the help document in Adobe Reader displays a table of contents down the left side that provides access to the topics available in online help.

➤ To access the online help, perform one of the following actions

- Select the **Index** command from the Help menu
- Press F1

The JADE online help is then displayed.

About Command

Use the Schema Inspector dialog Help menu **About** command to access information about the Schema Inspector.

➤ To access the Schema Inspector information

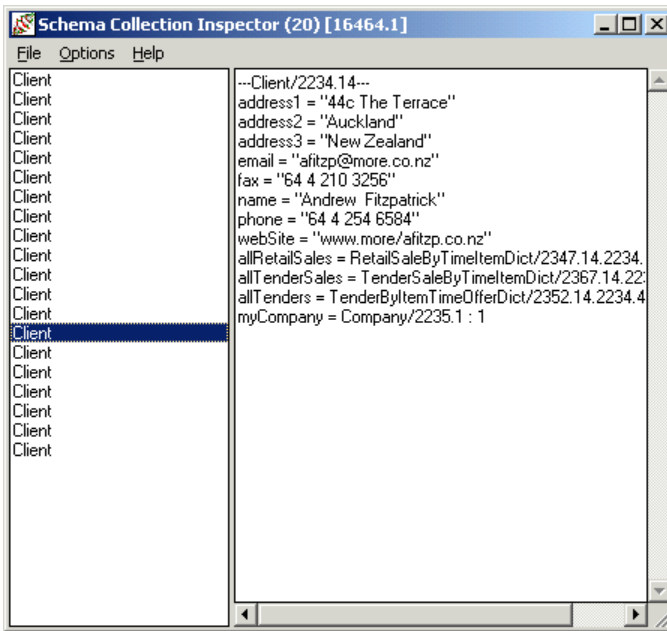
- Select the **About** command from the Help menu.

The About box is then displayed, providing information about the JADE release, copyright and licence information, database path, operating system of the workstation, and the file version (that is, ANSI or Unicode). This dialog is for display purposes only.

Tip Double-click the vertical WWW image positioned at the lower right of the JADE About box to access the JADE Web site home page (<http://www.jadeworld.com/>).

Using the Schema Inspector Window

The Schema Inspector, shown in the following diagram, is displayed when you have selected a class or classes from the deployment Schema Inspector dialog with the appropriate security.



The title bar of the window specifies the number of instances of the selected class. The left-hand list contains an entry for each instance of the selected class.

➤ To examine each object

- Select an object in the left-hand list.

The details for the selected object are then displayed at the right of the Schema Inspector window.

➤ To inspect a specific object (drill-down)

- Double-click on an object in the Object List at the left of the Schema Inspector window.

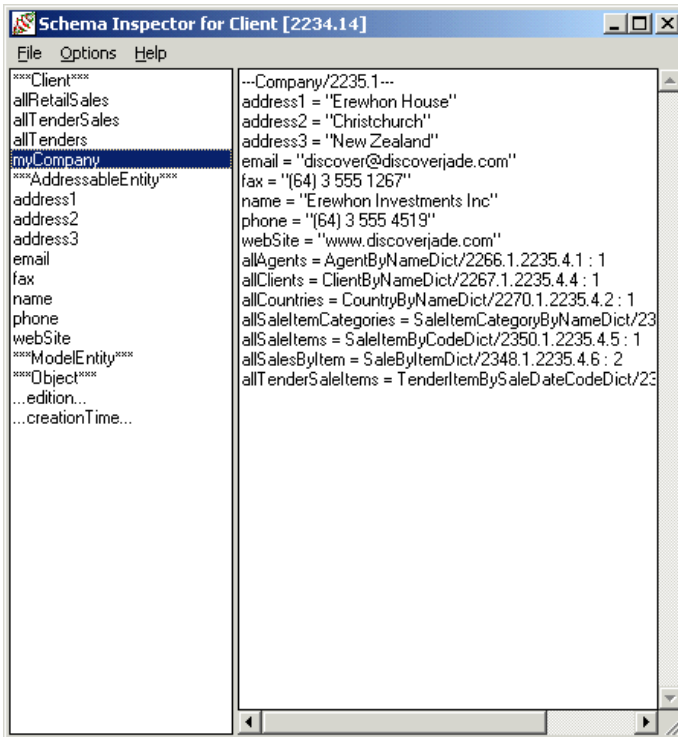
The specified object and any properties defined for that object are then displayed in a new Schema Inspector window.

The specified object and any properties defined for that object are then displayed in a new Schema Inspector window. The Schema Inspector displays the type, name, and dynamic attribute names and values of **JadeDynamicObject** instances.

➤ **To view the values for the current property in the object**

- Click the required property.

The values for the selected property are then displayed in the pane at the right of the window, as shown in the following diagram.



Note If the current property is a reference or a collection, you can double-click on it to open a new inspector window for that property. This enables you to “drill-down” through your references and collections.

You can inspect the edition or time an object was created, by clicking **...edition** or **...creationTime**, displayed beneath *****Object***** in the Object List at the left of the Inspector window.

The Schema Inspector window menu bar contains the following menus:

- **File**
- **Options**
- **Help**

Using the File Menu

Use the File menu in the Schema Inspector window to exit from the deployment inspector. (You can also exit from the Inspector window by clicking the close icon (☒) at the top right corner of the window or by selecting the **Close** command from the Control-Menu.)

➤ **To exit from the Inspector window**

- Select the **Close** command on the File menu.

The Schema Inspector window is then closed.

➤ **To close all open Inspector windows**

- Select the **Close All** command on the File menu.

All open Schema Inspector windows are then closed.

Using the Options Menu

➤ **To specify the font used to display text in the Schema Inspector window**

- Select the **Font** command from the Options menu if you want to change the default font from MS Sans Serif regular 8 points.

The common Font dialog is then displayed, to enable you to make your font selections.

When you have selected your required font options, focus is then returned to the Schema Inspector window.

Using the Help Menu

Use the commands in the Schema Inspector window Help menu to access the standard Common User Access (CUA) help options. These commands are listed in the following subsections.

Command	Description
Index	Opens the Schema Inspector online help, with all topics available in the online help file displayed down the left side of the help window in Adobe Reader.
About	Accesses information about the release of the JADE Schema Inspector. (For details, see “About Command” under “Help” , earlier in this document.)

For details about using JADE online help, see [“JADE Product Information Library in Portable Document Format”](#), in Chapter 2 of your *JADE Development Environment User's Guide*.

Index

A

About command, 9

C

class

- inspecting instances, 6
- inspecting runtime instances, 6-12
- security inspecting runtime instances, 7

Close All command, 12

Close command, 12

command

- About, 9
- Close, 12
- Close All, 12
- Exit, 8
- Find, 8
- Font, 12
- Index, 9, 12
- Superschemas, 9

D

data

- inspecting runtime, 6

database

- inspecting classes in deployment, 6-12
- inspecting deployed, 6
- inspecting records, 6-12
- inspecting runtime records, 6

deployment database

- inspecting classes, 6

deployment database class inspection, 6-12

E

executable program

- jade, 6

Exit command, 8

F

Find command, 8

Font command, 12

fonts

- changing Inspector window, 12

H

help

- obtaining online, 9, 12

home page

- accessing the JADE Web site, 10

I

Index command, 9, 12

inspecting runtime instances, 6-12

Inspector

- closing all open windows, 12
- using deployment schema, 6-12

instances

- inspecting object, 6-12
- inspecting runtime object, 6

J

JADE Web site

- accessing home page, 10

jade.exe program, 6

O

objects

- inspecting class instances, 6-12
- inspecting runtime class instances, 6

online help, 9, 12

P

programs

- jade.exe, 6

R

records

- inspecting deployment, 6-12
- inspecting runtime database, 6-12

S

schema

- inspecting instances in deployed, 6-12
- navigating, 6-12

- schema (*continued*)
 - navigating through, 6
 - navigating through deployed, 6
- Schema Inspector
 - running, 6
- Schema Inspector (*continued*)
 - using, 6-12
- security
 - runtime class instance inspection, 7
- Superschemas command, 9